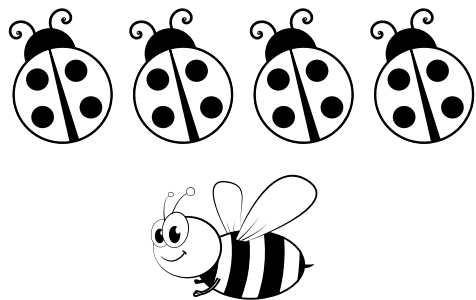


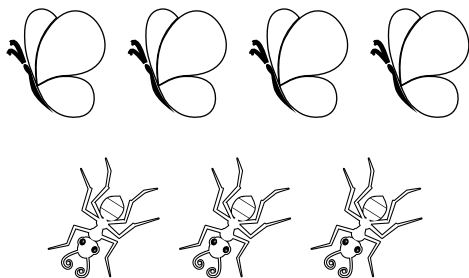
Name _____

Spring Insects Addition

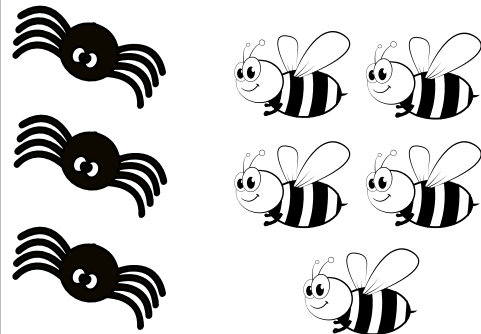
Directions: Complete each equations.



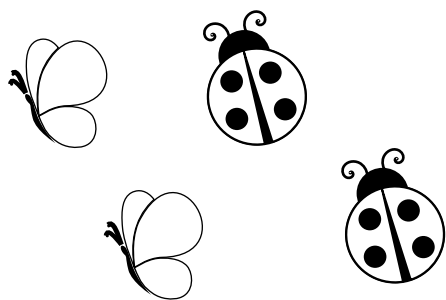
$$\boxed{4} + \boxed{1} = \underline{\quad}$$



$$\boxed{4} + \boxed{3} = \underline{\quad}$$



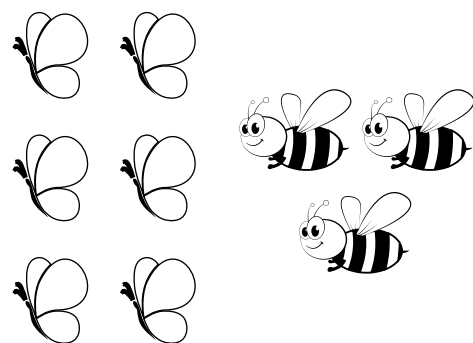
$$\boxed{3} + \boxed{5} = \underline{\quad}$$



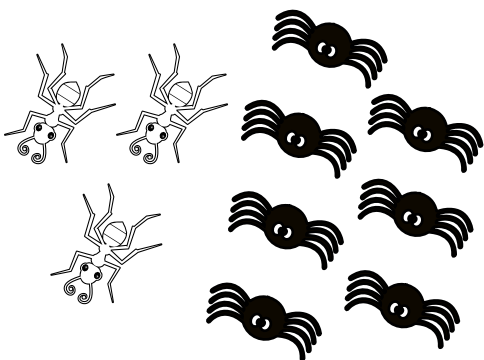
$$\boxed{2} + \boxed{2} = \underline{\quad}$$



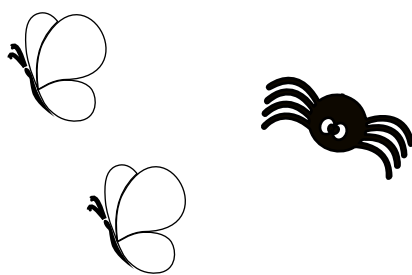
$$\boxed{3} + \boxed{3} = \underline{\quad}$$



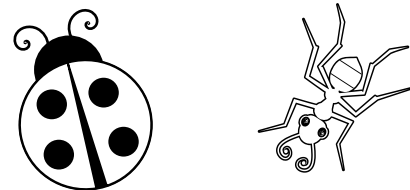
$$\boxed{6} + \boxed{3} = \underline{\quad}$$



$$\boxed{3} + \boxed{7} = \underline{\quad}$$



$$\boxed{2} + \boxed{1} = \underline{\quad}$$

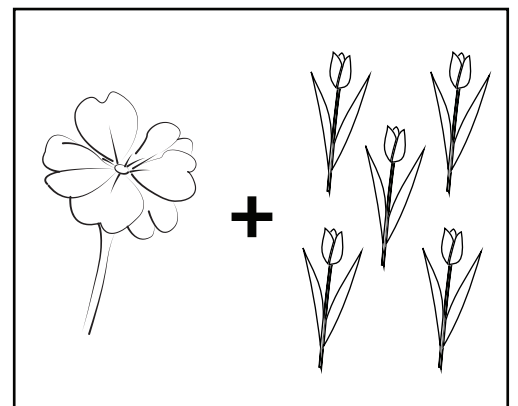
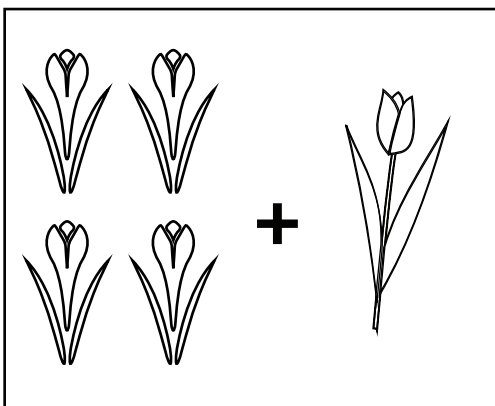
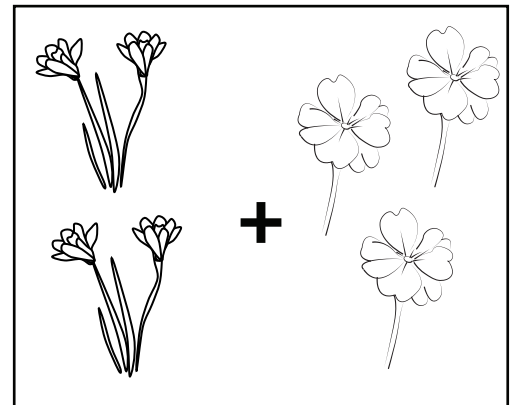
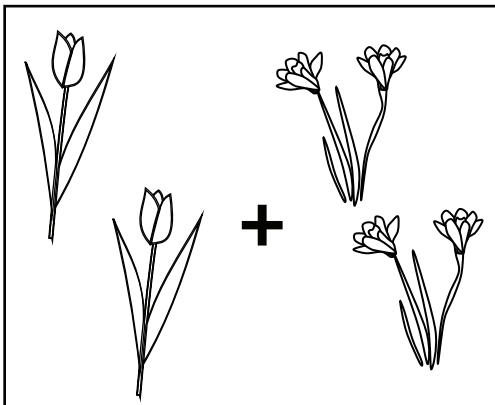
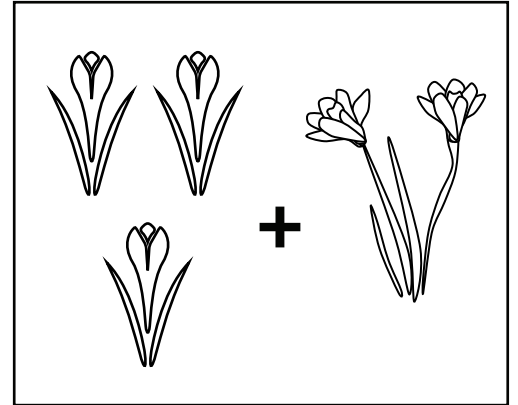
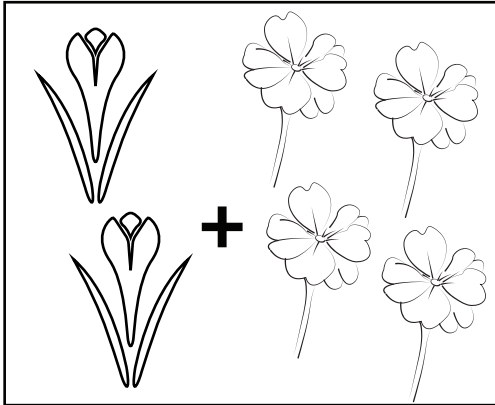


$$\boxed{1} + \boxed{1} = \underline{\quad}$$

Name _____

Spring Flowers Addition

Directions: Connect the same sums with a line.



Name _____

Spring Addition

Directions: Cut and paste the correct number to solve the addition problems.

